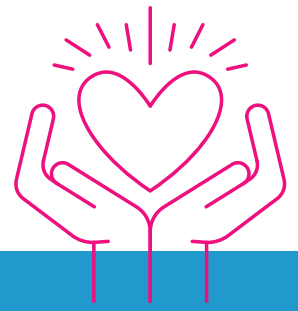


NEED HELP?



we care ... please ask for help

CRISIS AND EMERGENCY HELP

SUICIDE PREVENTION LIFELINE
1 (800) 273-8255

VETERANS CRISIS LINE
1 (800) 273-8255 PRESS 1

CRISIS NURSERY - ST. LOUIS
24-HOUR HELPLINE
(314) 768-3201

METROPOLITAN ST. LOUIS POLICE
DEPARTMENT
911 - EMERGENCY ASSISTANCE
(314) 231-1212 - NON-EMERGENCIES

MISSOURI POISON CENTER
1 (800) 222-1222

DISASTER DISTRESS HELPLINE
1 (800) 985-5990

ST. LOUIS COUNTY POLICE
DEPARTMENT
911 - EMERGENCY ASSISTANCE
(636) 529-8210 - NON-EMERGENCIES

NATIONAL CHILD ABUSE HOTLINE
1 (800) 422-4453

DOMESTIC VIOLENCE

DOMESTIC VIOLENCE HOTLINE
thehotline.org
1 (800) 799-7233 TTY 1 (800) 787-3224

NATIONAL TEEN DATING ABUSE
HELPLINE
1 (866) 331-9474

NATIONAL DOMESTIC VIOLENCE
HOTLINE
1 (800) 799-7233 TTY 1 (800) 787-3224

ALIVE
EMERGENCY SANCTUARY
CRISIS LINE (314) 993-2777

LYDIA'S HOUSE
(314) 771-4411

ANIMAL PROTECTIVE ASSN
DOMESTIC VIOLENCE PET
ASSISTANCE PROGRAM
(314) 645-4610 ext. 124

BRIDGEWAY
SAFE SHELTER - ST. CHARLES COUNTY
CRISIS LINE 1 (877) 946-6854

BRIDGEWAY
SAFE SHELTER - LINCOLN COUNTY
CRISIS LINE 1 (877) 462-1758

YOUTH/TEENS

THE NATIONAL RUNAWAY SAFELINE
1 (800) RUNAWAY (786-2929)

THE TREVOR PROJECT:
TREVOR LIFELINE
1 (866) 488-7386

CRISIS TEXT LINE
Text START or GO to 741741

24/7 YOUTH CONNECTION HELPLINE
1 (877) 928-2929

LGBTQ+ NATIONAL YOUTH TALKLINE
(youth serving youth through age 25)
1 (800) 246-7743

SEXUAL ASSAULT HOTLINE
1 (800) 656-HOPE (4673)

NATIONAL HUMAN TRAFFICKING
HOTLINE
1 (888) 373-7888

COVENANT HOUSE
NINELINE.org
(314) 533-2451

ADDICTION RESOURCE HOTLINE
1 (800) 662-HELP (4357)

we care ... don't wait ... please ask for help
online version here >>> www.union-avenue.org/outreach



HOMELESS/EMERGENCY SHELTER/HOUSING SUPPORT

HOMELESS HOTLINE
(314) 802-5444

HOUSING RESOURCES CENTER -
ST. LOUIS CITY & COUNTY HOTLINE
(314) 802-5444

METRO STL EQUAL HOUSING
OPPORTUNITY COUNCIL
1 (800) 555-3951

ST. PATRICK CENTER - WELCOME CTR
800 N. TUCKER 63101
LUNCH 12 - 12:30 DAILY
(314) 802-0700

BIDDLE HOUSE OPPORTUNITIES CTR
1212 N. 13TH STREET 63101
Overnight shelter for men only
(314) 612-1675

GATEWAY 180
HOMELESSNESS REVERSED
(314) 231-1515

BEYOND HOUSING
(314) 533-0600

GATEWAY HOUSING FIRST
(314) 771-5335

HOMELESS VETERANS PROGRAM
(314) 652-4100 Ext. 55460

HOUSING OPTIONS FOR ELDERLY
1 (888) 776-0155

ST. LOUIS HOPE HOUSE
(314) 382-3801

SUNSHINE MINISTRIES
(314) 231-8209

HEALTH/MENTAL HEALTH/ELDER CARE

NATIONAL ALLIANCE ON MENTAL
ILLNESS - NAMI HELPLINE
1 (800) 950-6264

PLANNED PARENTHOOD:
SEXUALITY INFO & RESOURCES
1 (800) 230-7526

PARAQUAD - INDEPENDENCE FOR
PEOPLE WITH DISABILITIES
(314) 289-4200 TDD: (314) 289-4252

MENTAL HEALTH
TREATMENT CENTERS LOCATOR
1 (800) 662-4357

SUBSTANCE ABUSE TREATMENT
1 (800) 662-HELP (4357)

ELDER CARE ABUSE LOCATOR
1 (800) 677-1116

EATING DISORDERS TREATMENT
1 (800) 931-2237

NATIONAL HIV/AIDS HOTLINE
1 (800) 342-2437

ST. LOUIS ARC
(314) 569-2211

LGBTQ+

THE LGBTQ+ HOTLINE
1 (888) 843-4564

TRANS LIFELINE
1 (877) 565-8860

METRO TRANS UMBRELLA GROUP
(314) 270-2155

NATIONAL HIV/AIDS HOTLINE
1 (800) 342-2437

PRIDE CENTER OF STL
(314) 500-1270

GROWING AMERICAN YOUTH
(314) 669-5428

LGBTQ+ NATIONAL YOUTH TALKLINE
1 (800) 246-7743

INTERFAITH RESIDENCE - DOORWAYS
(314) 535-1919

FOOD OUTREACH
(314) 652-3663

LEGAL

LEGAL SERVICES OF EASTERN MO
1 (800) 444-0514

VICTIM CONNECT
HOTLINE FOR CRIME VICTIMS SERVICES
1 (855) 484-2846

ARCHCITY DEFENDERS
(314) 361-8834

we care ... don't wait ... please ask for help
online version here ►► www.union-avenue.org/outreach

